

## KINETIC-SWITCH, Wireless Transmitter w/o battery with Emergency Box for Lift Shaft



### WIRELESS TRANSMITTER

#### Technical Data

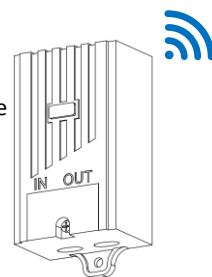
- Frequency: 433.92MHz/GFSK
- Transmission Range: Max. 150 M (open area)
- IP Class: IP66
- Size: 80 x 80 x 17mm
- No Battery needed
- One transmitter can match countless receivers, one receiver can match 10 transmitters.
- Operating environment: 0 to +35 °C
- Transmission Power: < 10dBm
- CE + UKCA Declaration of Conformity
- REACH- and RoHS-Conform



### MINI RECEIVER

#### Technical Data

- LED indicates power ON/OFF or code learning status
- Manual ON/OFF
- Receive Range: Max 150 M (open area)
- Frequency: 433.92MHz/GFSK
- 230V-50Hz, Max. 2300W
- Operating environment: 0 to +35°C
- CE + UKCA Declaration of Conformity
- REACH- and RoHS-Conform



### Wiring diagram

See reverse side

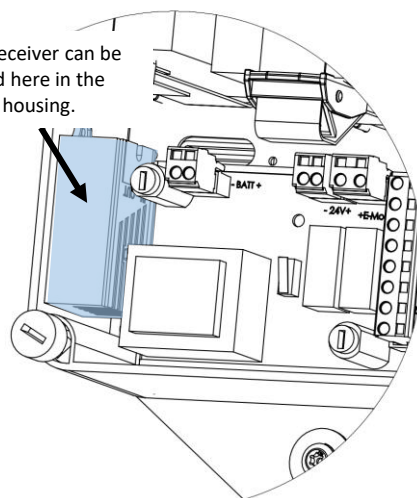
### Programming mode Transmitter with Mini Receiver

**First use Method:** If receivers not paired before, connect it to power supply, the receiver LED will start blinking. This means the receiver is ready to pair, hold down the chosen ON/OFF button of the transmitter. When paired successfully, the receiver LED will go solid and stay on.

**Reuse Method:** If receivers paired with transmitter before, connect it to power supply (the LED won't blink) and hold down the receiver pair button until the LED start blinking. This means the receiver is ready to pair, hold down the chosen ON/OFF button of the transmitter. When paired successfully, the receiver LED will go solid and stay on.

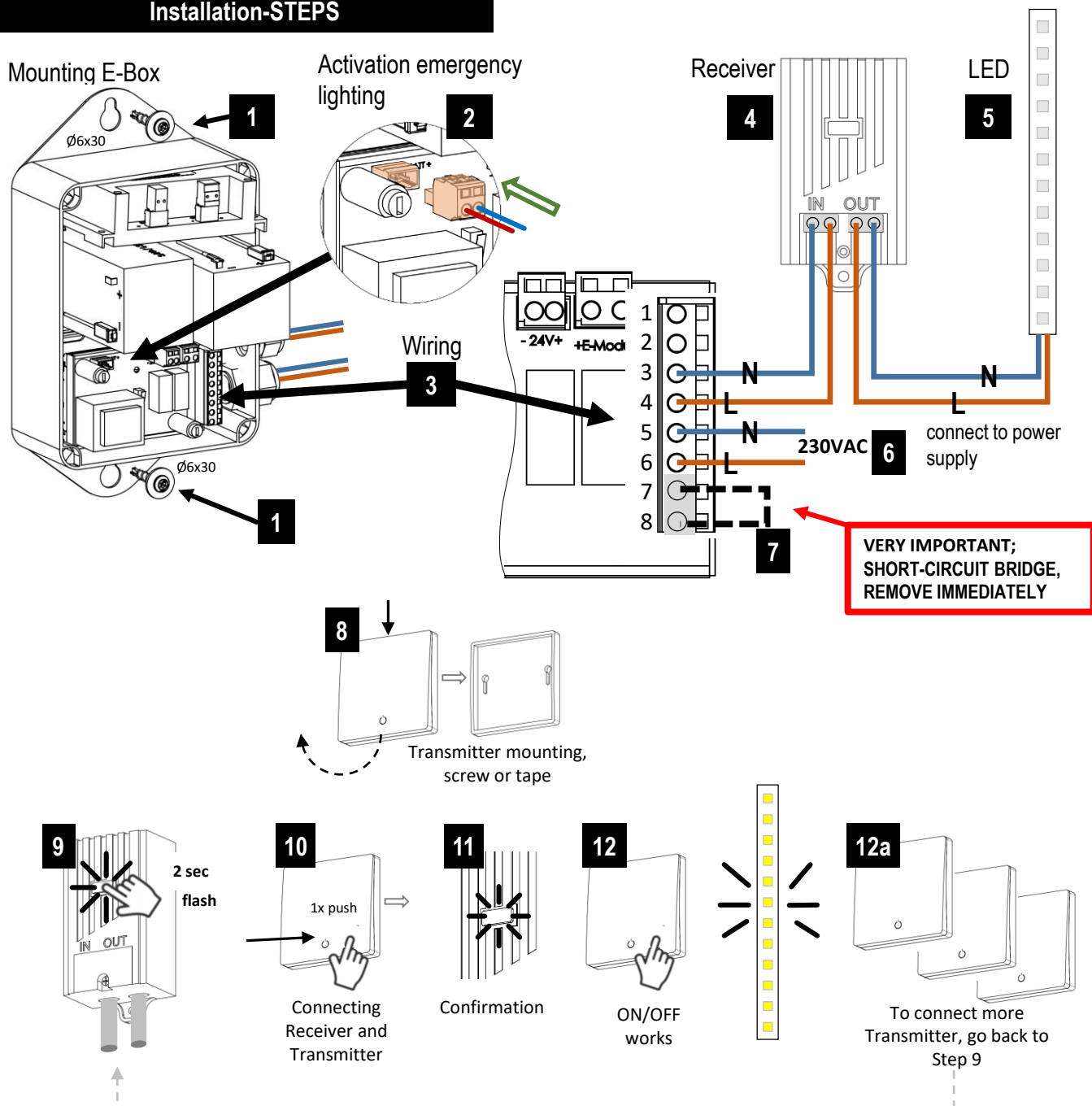
If it fails to pair in 15s, the LED will go out. If you want to continue to pair, please hold the button of receivers again until the LED starts blinking, then pair again.

The Receiver can be placed here in the E-Box housing.



## KINETIC-SWITCH, Wireless Transmitter w/o battery with Emergency Box for Lift Shaft

### Installation-STEPS



### 13 FUNCTION-TEST

Turn the power of to check the emergency function!  
when the light is not switched on ->change to Step **3 - 7** and check the wiring.